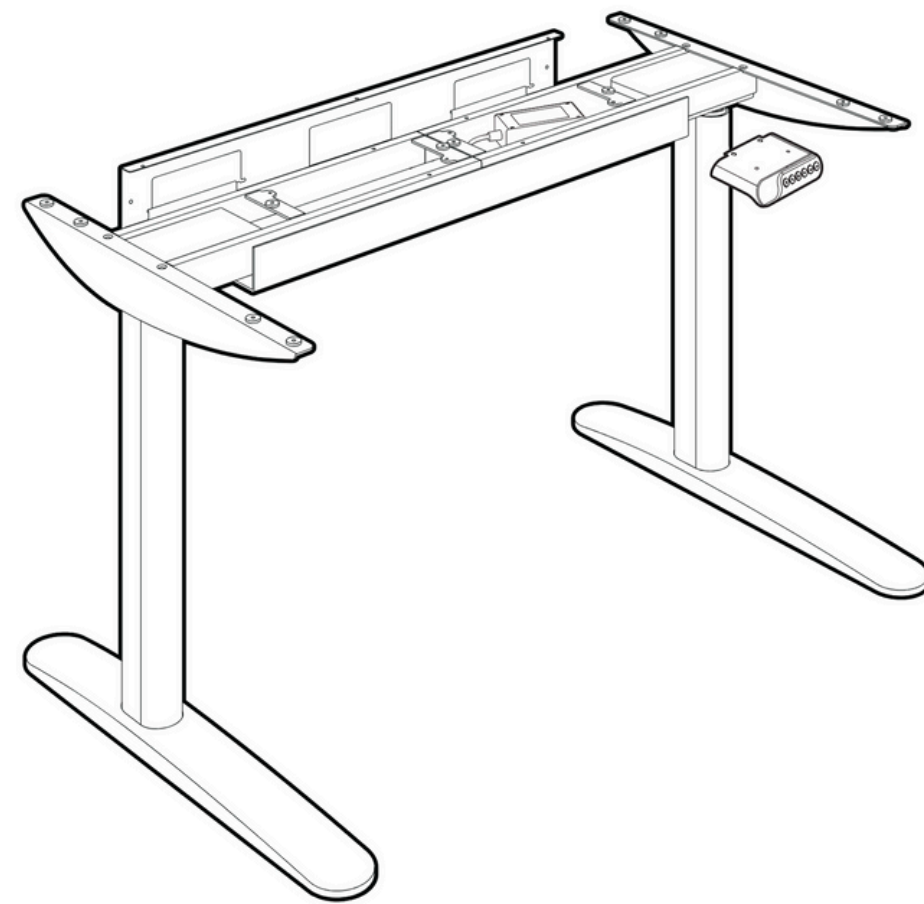


JUVIVO

SO3-B1

Installation Guide



Images are for reference only, please refer to the actual product.
Please read this product manual carefully before use and keep it properly!

Edition: First Edition, March 2025

INSTRUCTIONS FOR USE

Execution standards

Q/NLG004 Height-Adjustable Desk Industry Standard

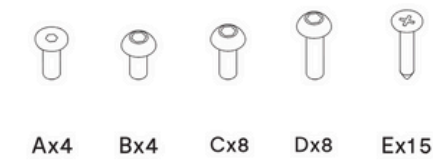
Technical Data

Column stage	3
Max. Load Capacity	220.5 lbs
Max. Speed	1.0"/s
Lowest Height	25.0"
Highest Height	50.6"
Applicable Tabletop Size	Length: 47.2" - 78.7"
	Width: 23.6" - 31.5"
	Thickness: >0.7"

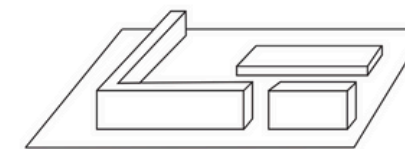
Product List

Accessory List

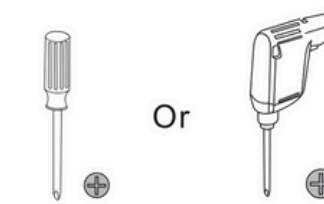
Note: The line drawings below are for reference only and may differ slightly from the physical product in some cases. Please refer to the actual product for accuracy. If any tools are missing or there are problems with installation, please contact customer service.



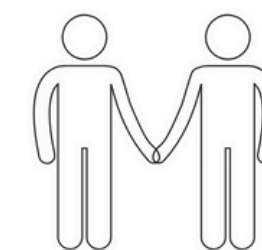
Preparation before installation



Install on carpet to prevent scratches.



Bring your own pistol drill.



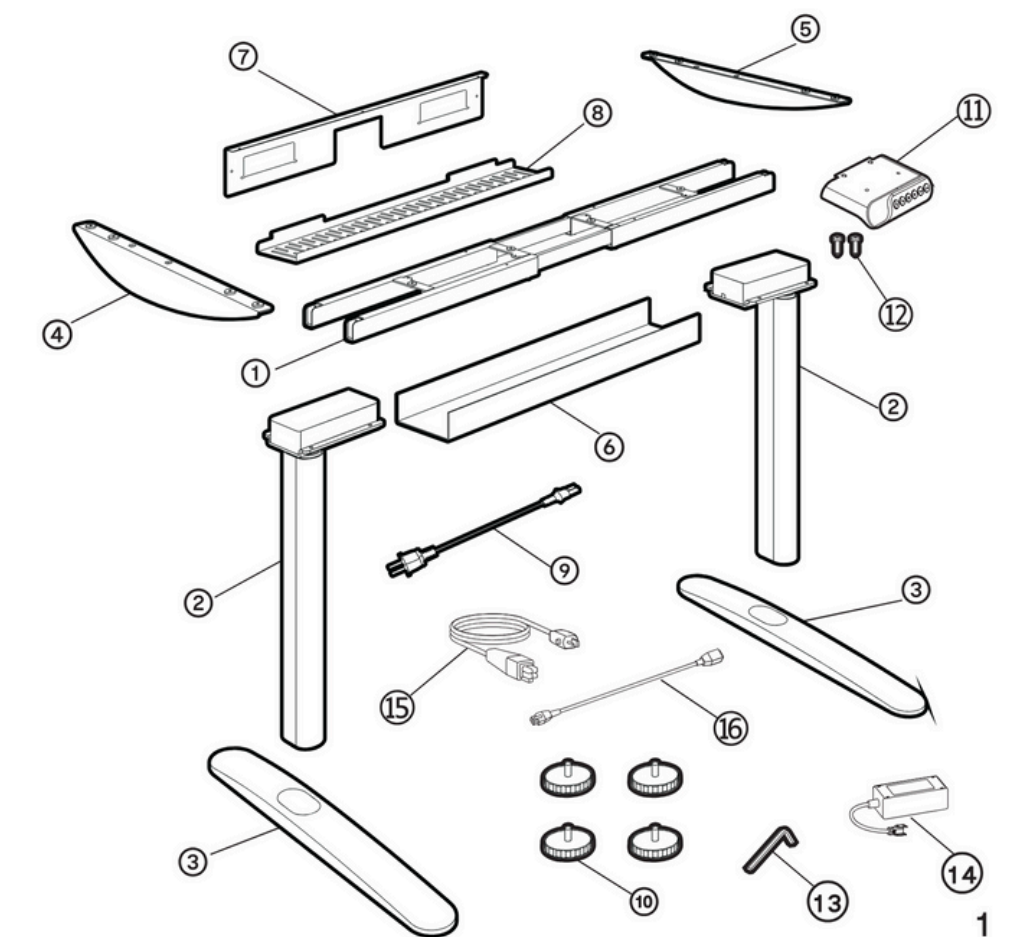
Need two or more people to cooperate together.

Part List

	Part
①	Supporting beam x1
②	Column x2
③	Pedestal x2
④	Left side bracket x1
⑤	Right side bracket x1
⑥	Cable cover x1
⑦	Cable tray bracket x1
⑧	Cable tray x1

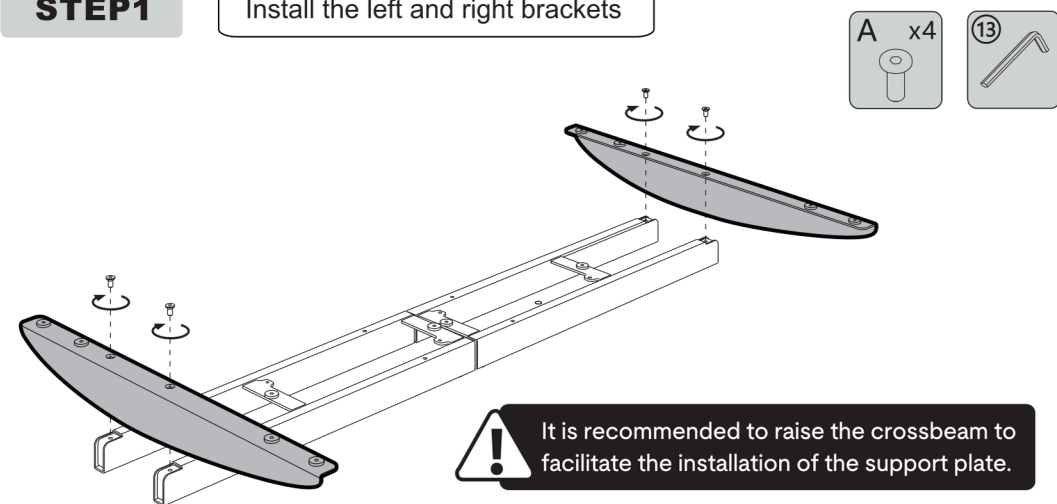
	Part
⑨	Power cable x1
⑩	Pad x4
⑪	Hand control x1
⑫	Hand control screws x2
⑬	4x4 wrench x1
⑭	Adapter x1
⑮	Adapter cable x1
⑯	Extension cable x1

Installation diagram



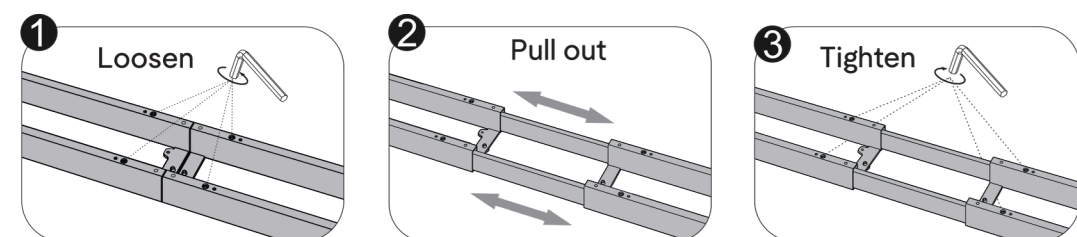
Installation Steps

STEP 1 Install the left and right brackets

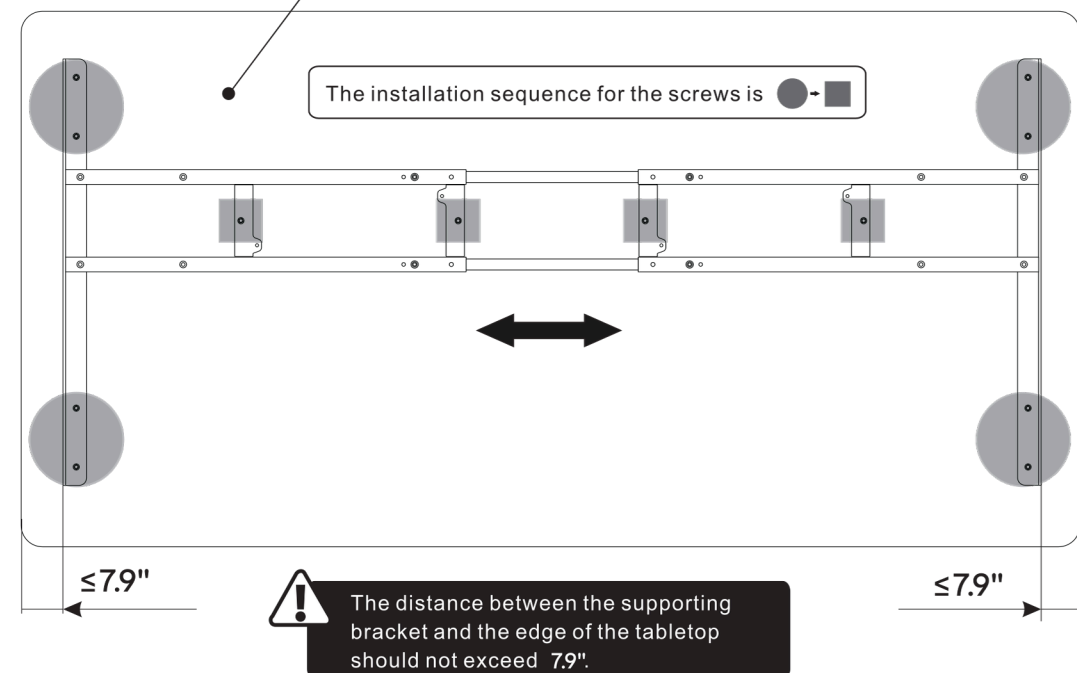


STEP 2 Install the desktop

The extension distance of the support crossbeam can be adjusted based on the actual usage.

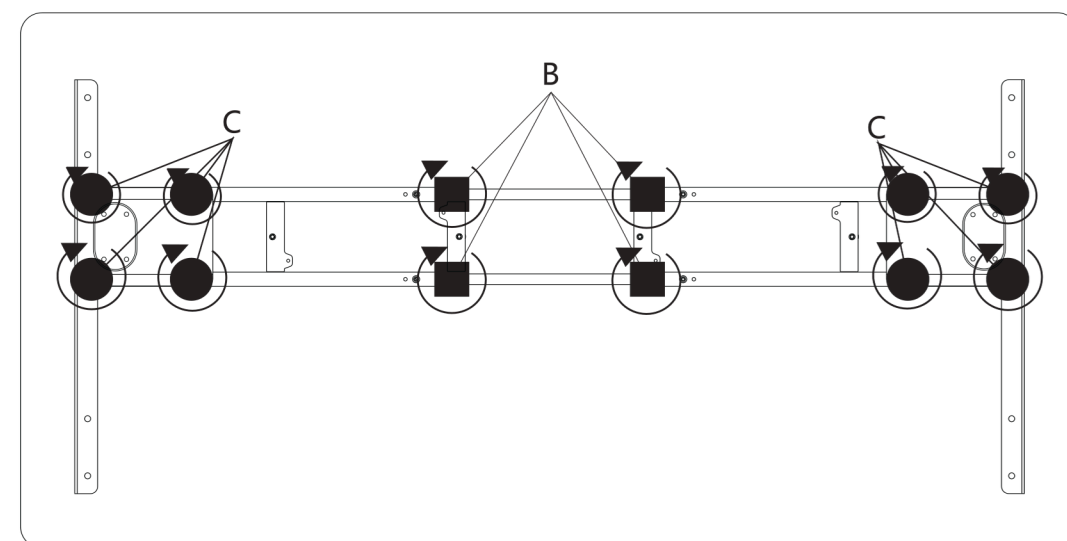


This desktop is self-provided. Ensure it can support 220.5 lbs, with the desktop weight deducted for actual use.

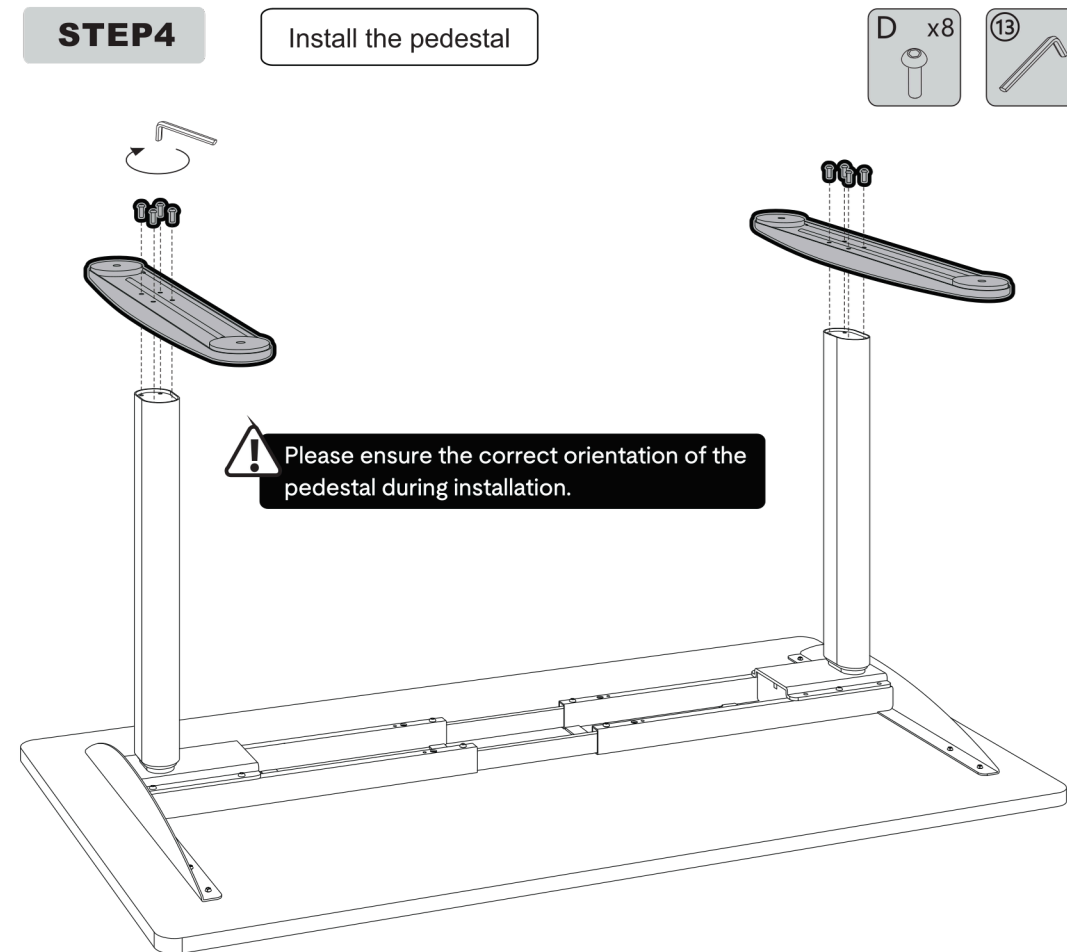


STEP 3 Install the Column

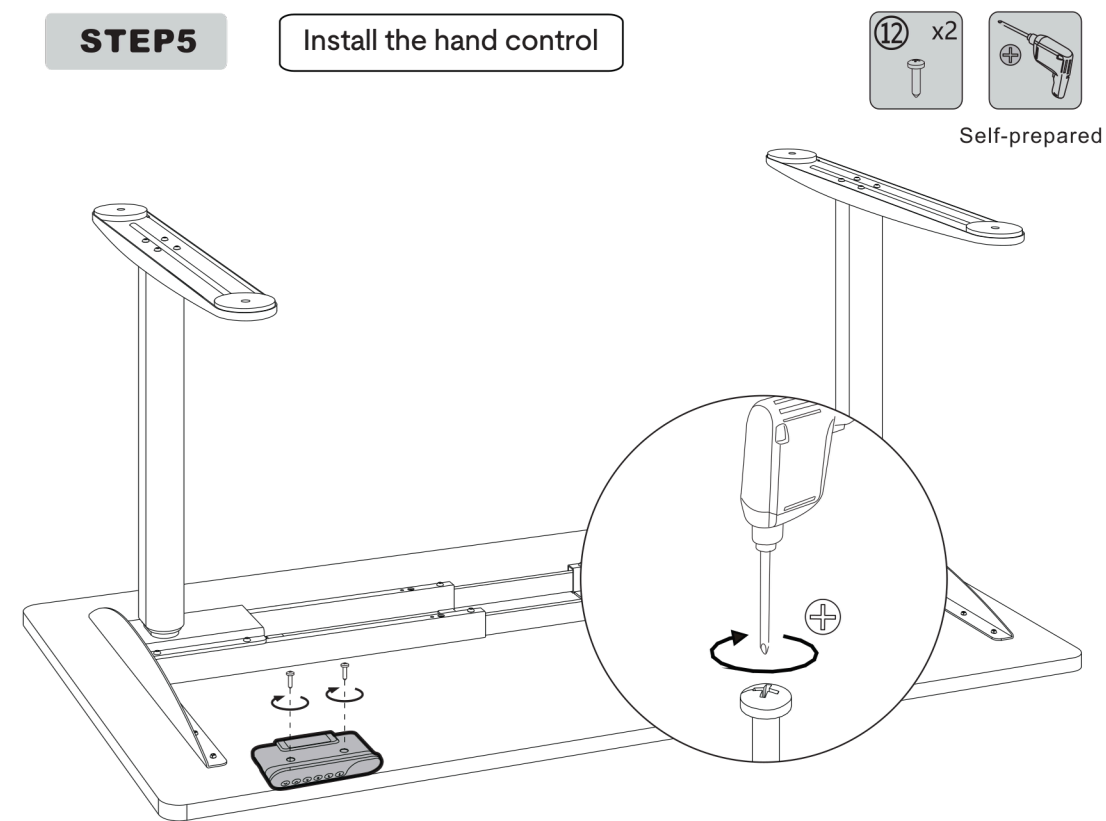
The installation sequence for the screws is ●-■



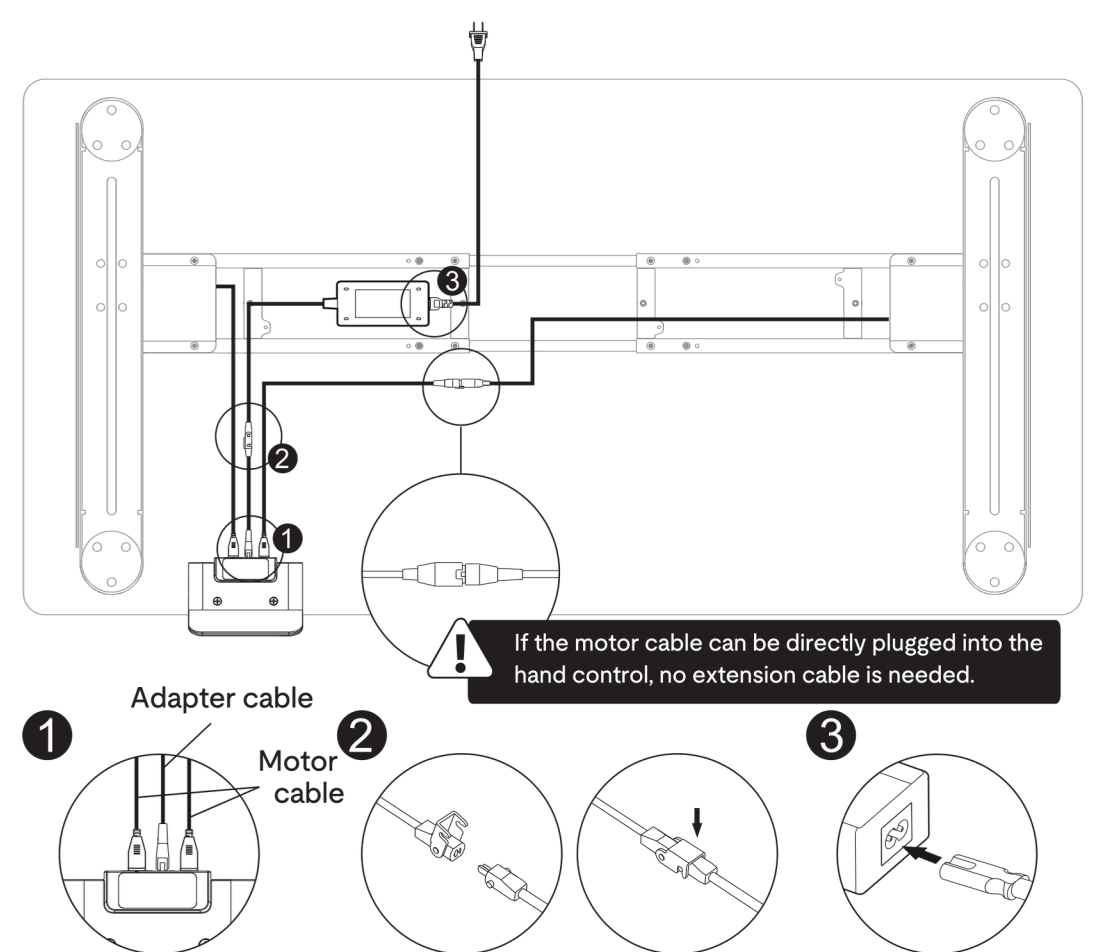
STEP 4 Install the pedestal



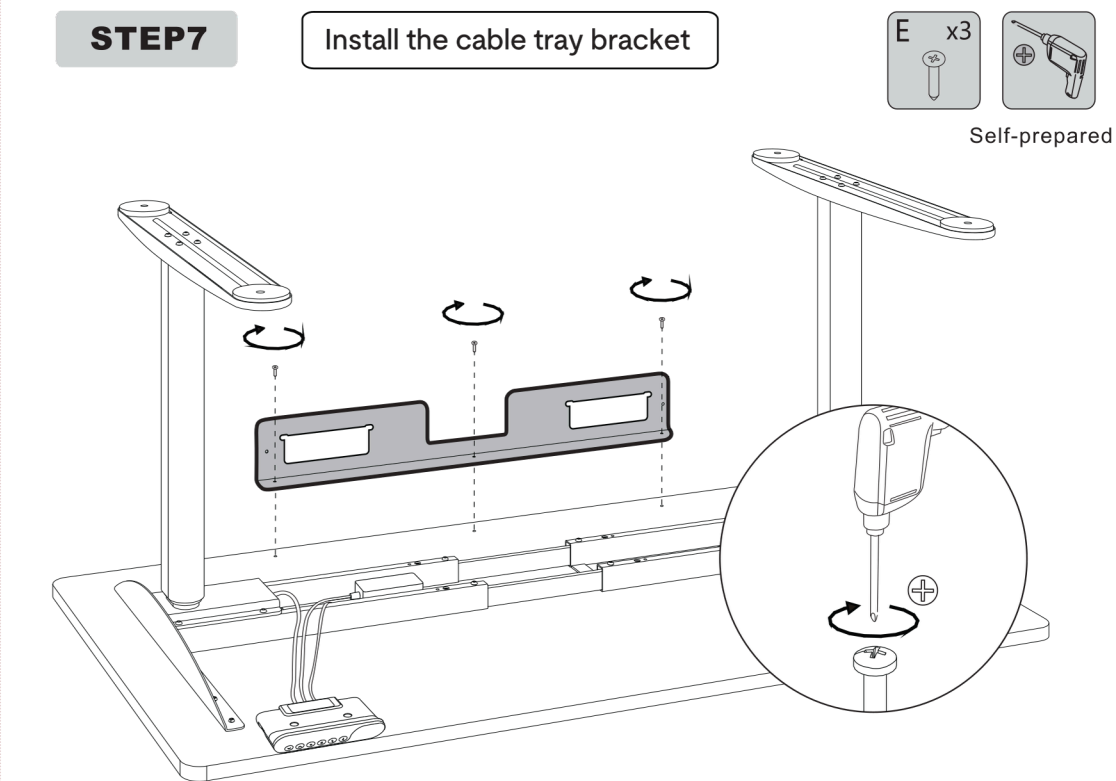
STEP 5 Install the hand control



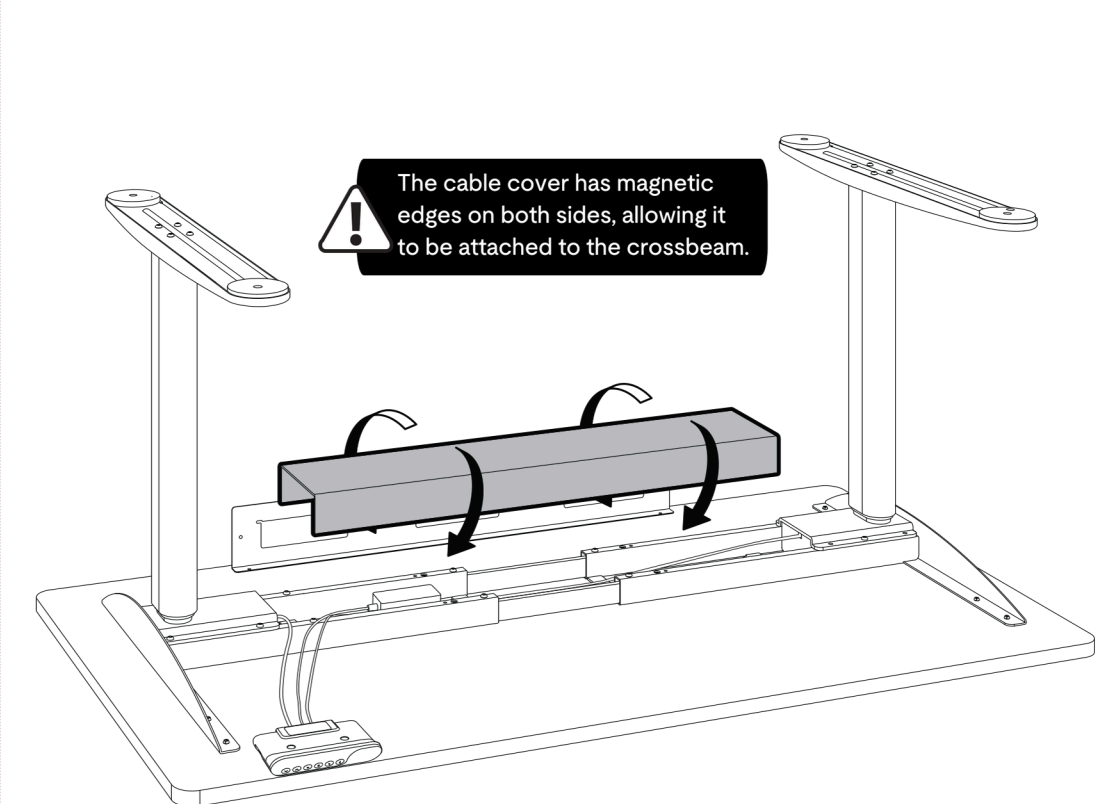
STEP 6 Connect the power cables



STEP 7 Install the cable tray bracket

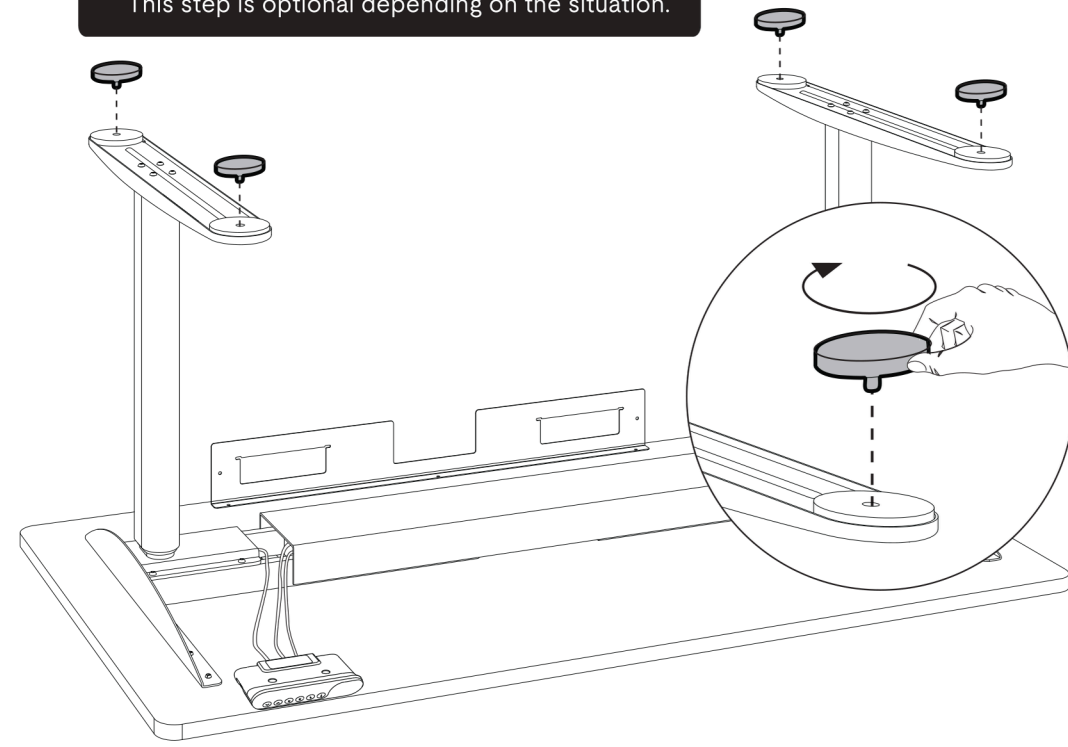


STEP 8 Install the cable cover

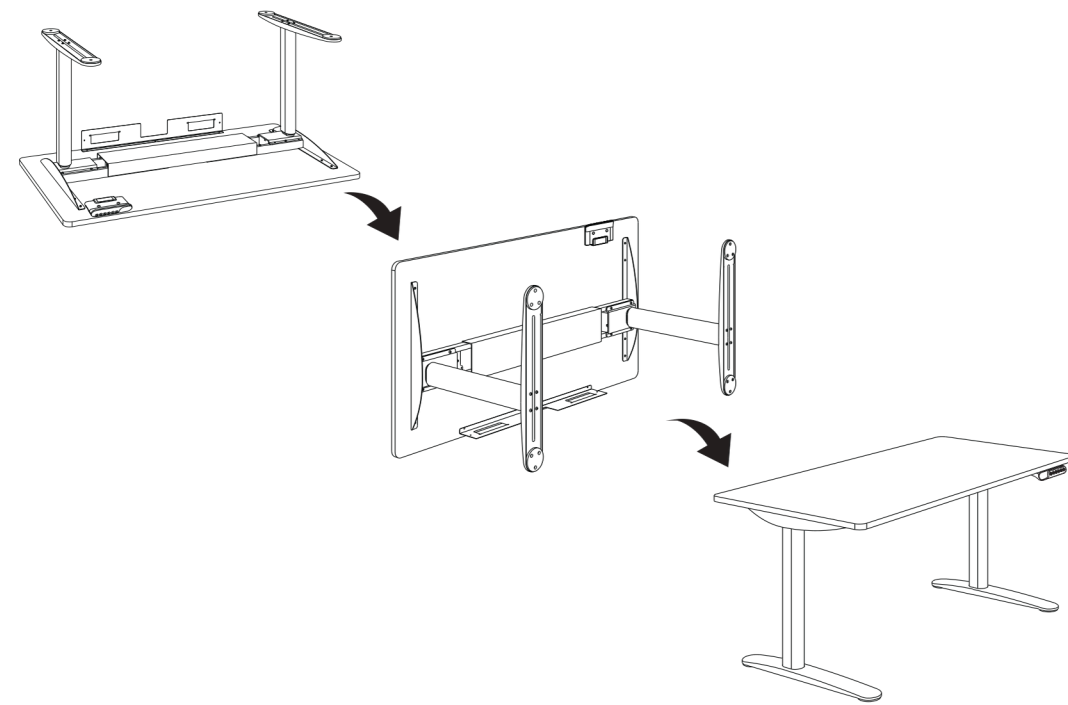


STEP9 Install the pad

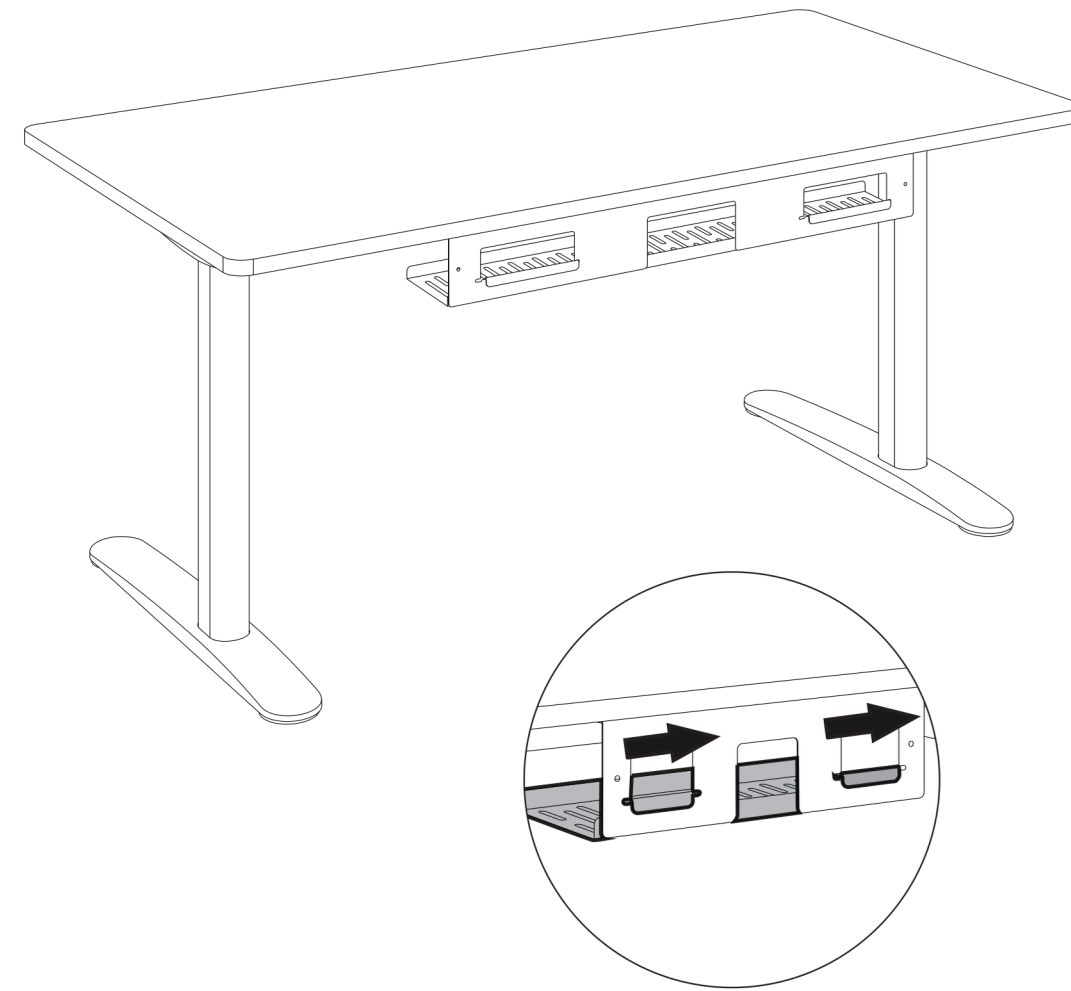
Adjust the tightness of the foot pads to balance any unevenness caused by the uneven ground. This step is optional depending on the situation.



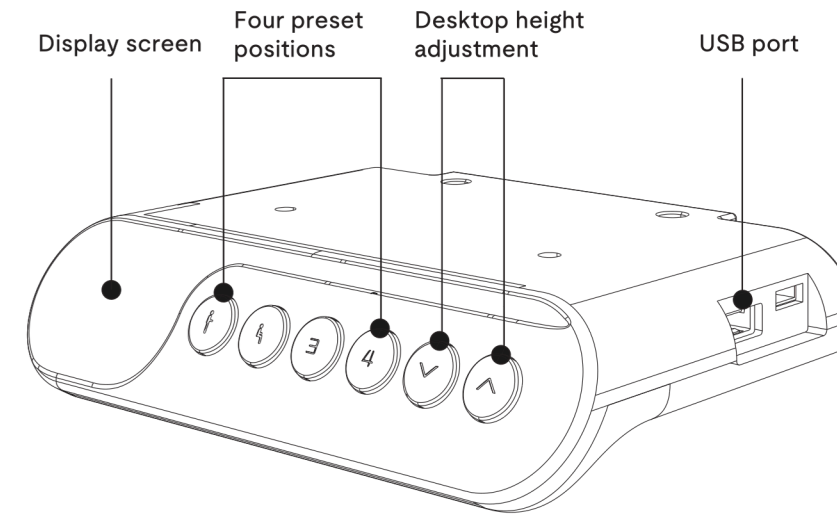
STEP10 Flip the desk



STEP11 Install the cable tray



USER INSTRUCTIONS



Note
Ensure that there are no obstacles blocking the movement of the table during the lifting process and confirm that all cables are long enough for the table to move up and down.

Suggestion
Set the most comfortable height when sitting as "1" and the most comfortable height when standing as "2". Additional preset heights can be freely set to other heights.

Fast charging features

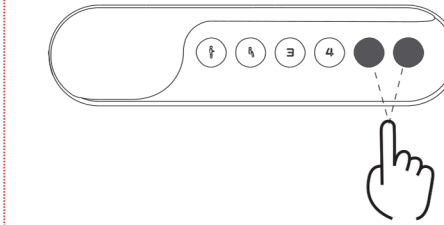
Safety: The product is equipped with built-in over-temperature protection, over-current protection, short-circuit protection, and output interface current limiting protection. These features ensure that the product operates within a normal current range and safeguards against potential hazards.

Compatibility: The product is compatible with mainstream smartphones and laptops available on the market, allowing for fast charging of devices.

Output parameters

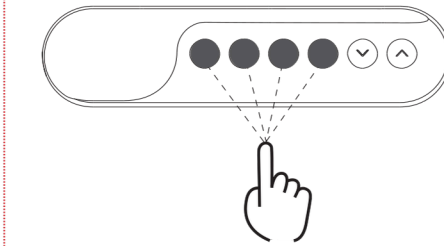
- a. Single USB Type-C port output: MAX 45W, 5V=3A, 9V=3A, 12V=3A, 15V=3A, 20V=2.25A.
- b. Single USB Type-A port output: MAX 27W, 5V=2A, 9V=2A, 12V=1.5A, 15V=1.8A, 20V=0.9A, compatible with Xiaomi CHARGE TURBO, Huawei FCP/SCP, Samsung AFC protocols.
- c. When both Type-C and Type-A are connected to the device, the output voltage drops to 5V to power the device, with a maximum of 22.5W.
- d. The charging function will be disabled while the height-adjustable desk is in the process of height adjustment. Once the height adjustment is stopped, the charging function will resume normal operation.

Height Adjustment Function



a. By pressing the "▲" or "▼" button, you can adjust the height of the lifting table up or down, and the current height will be displayed on the screen.

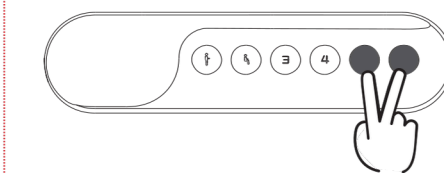
Height Memory Function



a. When the desk is stationary, press and hold the "1" button for 3 seconds. The display will show "5-1", indicating that the current height has been saved successfully. After moving the desk to any height, press the "1" button to automatically return to the saved memory height.

b. Buttons "1", "3", and "4" have the same memory height function as the "111" button. Repeat the above steps to save the corresponding memory height, and press the button to automatically return to the saved memory height.

Obstacle Reversal Function

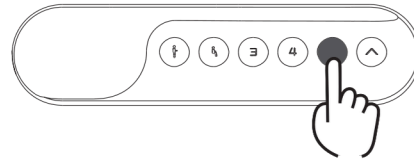


a. Simultaneously press and hold the "▼" and "▲" keys for 3 seconds to switch sensitivity. Each press changes to the next level, with a total of four levels. (R-0, R-1, R-2, R-3)

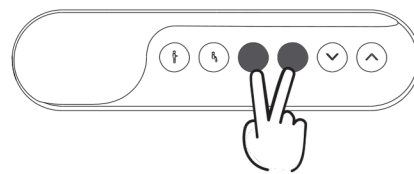
- b. " R-0 " : Turn off anti-collision function
- " R-1 " : Low sensitivity
- " R-2 " : Medium sensitivity
- " R-3 " : High sensitivity

c. If the desk encounters an obstacle during ascent or descent, it will immediately reverse direction for protection.

● Reset Function

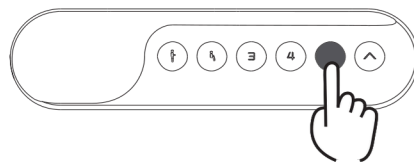


a. When the display screen shows "r5t", the height-adjustable desk enters the reset state. Press and hold the "v" button until the desk reaches the lowest position and stops rebounding. The display screen will show the height number. Release the downward button "v" to complete the reset process.



b. When the height-adjustable desk is in a stationary state, simultaneously press and hold the "3" and "4" keys for three seconds to enter the reset mode. Following the above steps will complete the reset process, and it will clear the memorized height settings.

● Error Code Processing



- If the display shows "E01" or "E02", please allow the table to rest for at least 18 minutes before using it again.
- If there are other error codes and pressing the "v" downward key does not respond, please check that the connecting cable is not damaged and properly connected. Disconnect the power for at least 10 seconds, then reconnect it. The screen will display "r5t". Press and hold the "v" downward key to reset.
- If the desk still does not function properly after performing the above steps, please contact customer service for assistance.

Troubleshooting

This list is used for checking and solving faults and errors. Please contact the manufacturer if problem you encounter is not on the list below.

Problem	Solution
The electronic functions are unable to operate properly	Check the cable connection
Speed of lifting is slow	Check if the load weighs more than 220.5 lbs
The worksurface slides downward	
The device often enters the reset state	
Only descending, not ascending, or only ascending, not descending	Perform a reset operation
Insufficient height for ascending and descending	
The bottom cannot rise	
After exceeding the working duty cycle requirements (Duty cycle: Max 2min on/18min OFF)	Power off for 18 minutes and then reconnect the power
When pressing the down key, the device goes up instead	Check if there are any obstacles or hanging cables under the table

Recycling and Disposal



This product cannot be disposed of as household waste. To prevent damage to the environment, this product should be recycled. Please use the relevant recycling systems available to you or contract the distributor or manufacturer for recycling assistance.

! Attention

- Power supply: AC100V-240V, frequency 50/60Hz.
- Operating environment: Indoor, 0-40 °C (32-104 °F)
- Before cleaning, make sure to unplug the power cord. Use a slightly damp cloth to wipe away surface dust, taking care not to let water drip into the internal components or damage the connection wires. Regularly check if screws are loose and tighten them if necessary.
- The electrical box contains electronic components, metals, plastics, wires, etc. Dispose of it according to the environmental regulations of your country, not as regular household waste.
- Before using the product, carefully inspect and ensure that it has been correctly installed. Use only the accessories provided by the manufacturer for installation. Leave adequate safety clearance when placing the product to avoid pinch hazards.
- Before first use, familiarize yourself with all the functions and program settings of the product.
- Children are not allowed to play on this product. Certain unpredictable behaviors may result from children playing on the product, and the manufacturer will not be responsible for any resulting accidents.
- Slight noises from the multi-belt or brake system caused by the structure will not affect the use of the equipment.
- The use of corrosive or abrasive materials for cleaning equipment is prohibited. Make sure that the cleaning agents used will not contaminate the environment.
- Operate the equipment only after understanding the relevant hazards. Children under the age of 14 or individuals with physical or sensory impairments or mental disabilities should use the equipment under proper supervision and guidance. Children should not have unattended access to the product.
- Children should not perform cleaning and user maintenance without supervision.
- In case of power cord damage, it must be replaced by the manufacturer or relevant professionals to avoid injury.
- Ensure that your operating environment is free of any potential hazards, such as not littering tools. Always handle packaging materials with caution to avoid various potential dangers, such as the choking hazard posed by children playing with plastic bags.
- When moving the product, ensure that there are no items placed on the table, the drawers and doors are closed securely, screws are tightened, and the power plug is unplugged. Use at least 2 people for moving. If necessary, keep the original packaging for future transportation.
- When storing for a long time, unplug the power cord and clean out any loose objects. Store it in a cool and dry place.
- This product contains small parts that can pose a choking hazard if swallowed accidentally. Keep these small accessories away from children.

📍 300 Goddard, Irvine, CA 92618

✉ inquiry@flexispotpro.com

🌐 www.flexispotpro.com

☎ +1(888)868-8446